

SIGN UP & STAY IN TOUCH

Your email address

>

ELSEWARE

We Are Elseware

Get In Touch

Design Shop (coming soon)

RSS Feed

Twitter

Facebook

Interviews Elseware – Labo Crème Brûlée



Categories

[All posts](#)
[Antiques](#)
[Architecture](#)
[Art](#)
[Books](#)
[Events](#)
[Fashion](#)
[Film](#)
[Furniture](#)
[Go Elseware](#)
[Eat Elseware](#)
[Home Accessories](#)
[Interiors](#)
[Interviews Elseware](#)
[Jewellery](#)
[Lighting](#)
[Markets](#)
[Music](#)
[News](#)
[Photography](#)
[Product](#)
[Technology](#)
[Textiles](#)
[Transport](#)
[Uncategorized](#)
[Vintage](#)
[Wall coverings](#)

The team at Labo Crème Brûlée, are reinterpreting the way we feel light with their LED-diffuser creations. Made in cast glass using the most avant-garde, energy-saving LED technique, each light is handmade in countless colours. Based in Palma de Mallorca, Labo Crème Brûlée, create striking installations as well as lighting for private homes, bars, hotels and restaurants around the world. I managed to snatch some time with Creative Director Christian Seltmann....

Tell us more about Labo Creme Brulee

We work with glass and light (uniquely with LED). Thus we combine in a magic way very old and state-of-art modern technology.

How do your craftsmen develop the distinctive look behind Labo Creme Brulee?

Through working every single part of the lights by hand. Just like human beings, everyone is unique and especially through the bubbles in the diffusers; every light shows a unique texture.

How long does it take to create each light?

As we work on demand and bespoke, it actually takes between 4 and 12 weeks to complete a light or a project, depending on the size and quality of the finishing-work.

Who comes up with the ideas for the range?

We were very lucky to start right away with very committed clients instead of doing "happy engineering" for years and then test the product on the market. They gave us some major impulses for the today's product range. The overall R&D and product-design is made by me.

Tell us more about your installations?

At the start we made coloured wall installations, for example up to one m² of blue glass diffusers. Meanwhile we do as well lots of pendular lights installations for staircases, entrance halls or restaurants with our "hangthem" or "the drop" diffusers.

Are you working on a new installation at the moment?

Currently we are working on an installation with a cluster of 10 "drops" for a client in a New York loft. Another other one is a big 24-chandelier for the entrance hall of a private clinic in Hamburg.

You recently collaborated with the La Sagrada Hotel in Istanbul, what was that like?

The architect for the hotel found us at the Lighting & Building Fair in Frankfurt. We all became pretty enthusiastic about the project as it is an old Osman building in Istanbul which is being reformed. As all lights are dangling from the ceiling above each table solely in the restaurant and the 3 bars, we developed for them a specific ceiling mount with minimal sizes (45x45x45mm) for the single-mount of the lights.

Working with LED's is a significant part of your designs, is being energy efficient important to you?

We never sold our products through the energy-efficiency aspect, we use LED because it is a design opportunity and relaxes my conscience. But clients are very interested in the aspect of not having to mind about changing any bulb for the next 5-10 years! This is surprising, when you know that if all lights in the world would be changed to LED now, we could cut off 50% of our energy resources at this moment (source: McKinsey); I think, not a single new nuclear power plant would have to be installed!

When did you decide to go into lighting?

In fact, I was 12 years old.

Do you have any advice for people entering the industry?

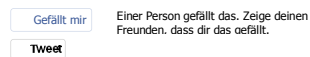
With LED technology, the sleeping lighting industry, is getting broad and dynamic. There is a huge range of different manufacturers' worldwide, lighting designers, product designers and marketing people working in this international, increasing market. But still, you will need a long breath as projects and processes are not quick.

Describe Labo Creme Brulee in three words?

Long-lasting craftsmanship and beauty

For more information go to www.labocremebrulee.com

Posted by Joanne King

**Tatiana Tafur Ltd**



Tatiana Tafur studied design at Inchbald School and went on to study History of Art at Sothebys. After working as an interior designer, she founded Tatiana Tafur Ltd with Andrew Tolson in 1993. Here we have featured a number of our favourite pieces from their furniture collection of Period, Contemporary and Outdoor pieces. They also offer specialist finishes such as Shagreen's and Parchment's and Laquer's, not to mention specialised collections of wallcoverings. They can also service any bespoke commissions. For more information visit tatianatafur.com

From top left:

Natural Driftwood & Shagreen top Piedmontese Side Table | Aluminium Trevi Table | Hand Painted Carmen four poster bed
Driftwood charcoal & Green Top Palazzo Capponi Console | Hand painted Leather screen | White & Gold Leaf Blenheim Console
French polished natural zebrawood Art Nouveau 2 Door Buffet Table | Tazza Urn Console | Shagreen & Laquered Ebony Bedside Table
Ebony on Cotibe wood & Arctic Leather Armless Chaise Apollon | Parchment Gloss Alhambra Sideboard | Anemone Table.

Images and information from Tatiana Tafur Ltd
Posted by Alice Carlisle

Zeige deinen Freunden, dass dir das gefällt.

Peter Le Blanc: Bronze Sculpture



Peter Le Blanc creates bronze sculptures. Based in Leicester he has produced a large portfolio over the years, most primarily based around insects and insect life. More recently he has been producing sculptures of a functional variety too, which is something we very much like here at Elseware along with a certain warmth and personality that manufactured items just do not exude. Featured here are our three favourites – The Bee door knocker, the Bunch of Grapes door knocker and the Beetle box, all cast in bronze. For more information visit peterleblanc.co.uk

Posted by Alice Carlisle. Images and information from peterleblanc.co.uk

Einer Person gefällt das. Zeige deinen Freunden, dass dir das gefällt.

Tufenkian Carpets





Tufenkian Carpets offer beautiful, high quality handmade carpets and rugs. What is so lovely about their collection is that all of their products use the finest materials and each carpet is carefully crafted using methods and techniques that are virtually unchanged. The variations inherent in natural materials and the human touch are celebrated by Tufenkian in every stage of the process, the result of a commitment to promote individuality and inspiration in all of its production. Each carpet therefore really is unique.

Tufenkian Showrooms

Chicago Rugs : 222 The Merchandise Mart Suite 14-199, Chicago, IL 60654

Dallas Rugs : 150 Turtle Creek Blvd, Ste 102, Dallas, TX 75207

Los Angeles Rugs : 501 N. La Cienega Blvd, Los Angeles, CA 90048

New York Rugs: 919 Third Avenue, New York, NY 10022

Portland Rugs: 515 NW 10th Avenue, Portland, OR 97209

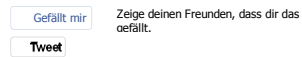
San Francisco Rugs: 25 Rhode Island, San Francisco, CA 94103

Hamburg, Germany Rugs: Sylvester Allee 2, D - 22525 Hamburg

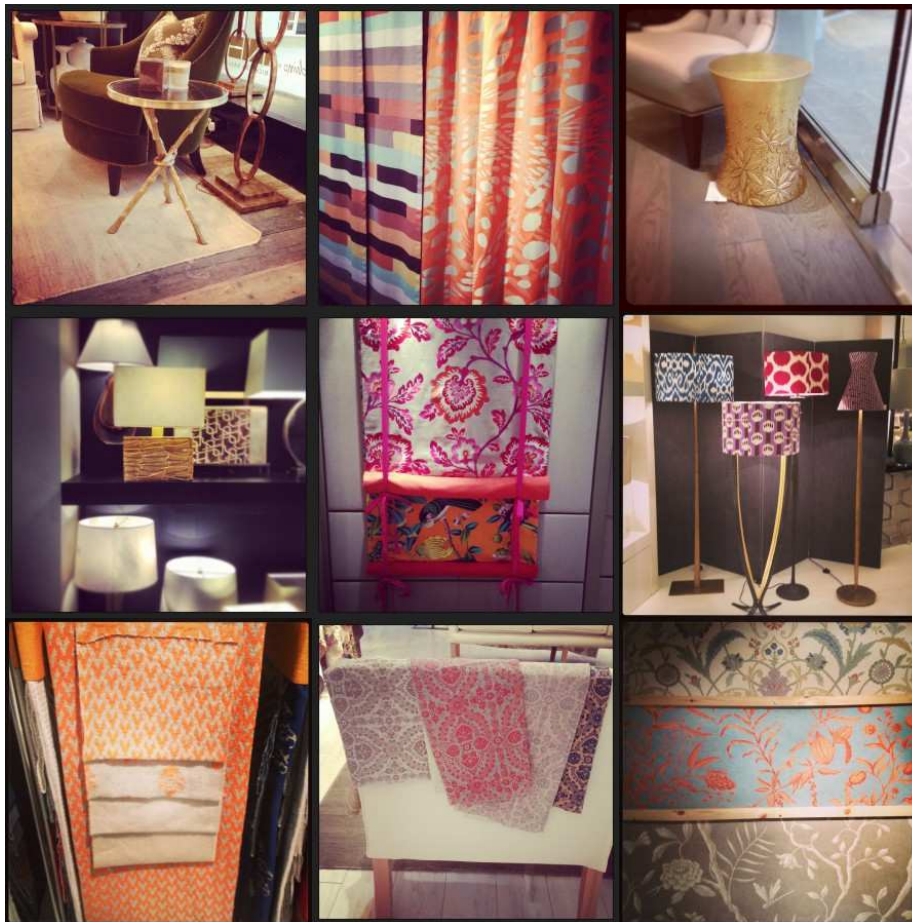
London Rugs: Design Centre, Center Dome 3rd floor, Unit 315, Chelsea Design Center, Chelsea Harbour Lots Road London, SW10 0XE

To see the whole collection visit tufenkiancarpets.com

Posted by Alice Carlisle. Images and information from tufenkiancarpets.com



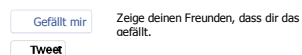
London Design Week



Last week Design Centre Chelsea Harbour hosted its annual London Design Week, so we headed on down to check out the latest launches. With nearly 100 showrooms, this is a fantastic place to glean some inspiration for your interior projects.

We picked up on a lot of warm metallic tones, such as gold, bronze and copper, especially used for accessories, side tables and lighting. These were complemented by some beautiful orange fabrics, and pops of bright colour in complementing prints. For more information go to www.dccch.co.uk

Posted by Jenny Aldridge @loveinteriors



Go Elsewhere: The Sketchbooks of Jack B Yeats 1897-1955



Jack B Yeats is famous for a number of reasons; his brother, William Butler Yeats, is one of literature's greatest wordsmiths and captured Ireland, it's people, and their lives, more eloquently in written form on the page than some photography from that era; his paintings are so highly regarded that he is proudly known to be one of Ireland's most acclaimed painters with some of his more famous works including *The Singing Horseman* (1949) and *Above the Fair* (1947) and *About to Write a Letter* (1964); and also for his drawings and illustrations. He began his career as a journalistic illustrator and he continued to draw and illustrate throughout his career, sketching everything he saw and found inspiration in. It is these personal sketchbooks that have gone on display for the first time in an exhibition in the National Gallery of Ireland, Dublin.

By the end of his life, he had over 200 sketchbooks and the gallery now holds 204 of these. Donated to the gallery by Anne Yeats, the sketchbooks are a magnificent insight into the artists life and inspiration, and form an integral part of his artistic practice.

The sketches within these personal visual musings are of subject matters that inspired him, such as boxing matches, the circus, the beautiful scenery and rugged landscapes of the west of Ireland where he lived for a long time, and his wife Cottie. He turned some of his drawings into small water colour paintings and are miniature works of art in their own right.

The exhibition runs until June 5, admission free.
www.nationalgallery.ie

Posted by Dee Laffan

Photos from (L-R):

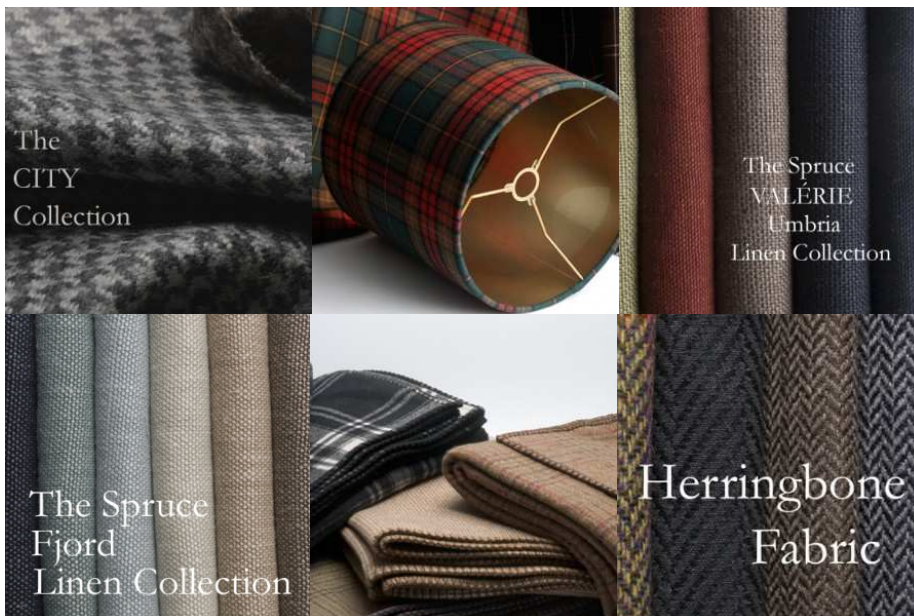
'Illustration from the exhibition catalogue cover, 'The Sketchbooks of Jack B. Yeats 1897-1955'. Photo © National Gallery of Ireland. © Estate of Jack B. Yeats. All Rights Reserved DACS 2013

'Jack B. Yeats, his wife Cottie Yeats, and "Hooligan", outside the Cashlauna Shelmidy Studio, c.1900. Photograph, Courtesy NGI Archive

'Jack B Yeats at Cashlauna Shelmidy, c. 1900. Courtesy NGI Archive

12 Personen gefällt das. Zeige deinen Freunden, dass dir das gefällt.

Spruce London: Luxury Fabrics



Winter isn't over yet, but spring IS on the horizon and Spruce London offer some of the finest fabrics around, producing collections that are unique, hand-finished, exclusive and beautiful for any season. Located in Sussex, they are a British company featuring only the best of British and European craftsmanship from the finest English, European, Scottish and Irish mills for luxury home furnishings and accessories. They offer fine wools, herringbone fabric, houndstooth fabric, check fabric, tweed fabric, wool tartan, cashmere fabric, and the finest Irish linen, Belgian fabrics and Italian fabric to help you create a home that 'reflects your needs, life experience and aspirations'. They also offer sampling, advice on fabric, curtain making services, bespoke lampshades and wholesale to the trade. www.sprucelondon.com.

Posted by Alice Carlisle. Images from Spruce London.

Einer Person gefällt das. Zeige deinen Freunden, dass dir das gefällt.

Interviews Elseware: Satesh Kapur



Lancaster Lights is the brainchild of designer Salesh Kapur, who transforms British heritage objects into unique pieces of design. A blend of traditional techniques and the latest cutting edge technology, each object is bespoke and ranges from a 1960's car extinguisher to a 1940 periscope British tank periscope.

Lancaster Lights breathes life back into old objects, what inspired you to become a designer?

This is certainly a good question and truth be told it quite hard to accurately answer. I think it's probably due to my dyslexia, often dyslexics can have very creative minds and I think this is certainly the case with myself. Answering this question, it was more to do with one particular day in my normal day job, when I became particularly bored! It was a combination of having a passion for beautiful lights being bored and a huge surge from within to start creating striking lights.

You are very proud of the history and heritage of Lancaster, does this influence you as a designer?

I am very proud to say that I come from Lancaster however in some respects this aspect is not totally reflected in my designs. I think the crux in my design is I like to show some of the wonderful past objects that used to be made in this country, and show to the world the wonderful craftsmanship that used to be commonplace across the United Kingdom, and importantly out past heritage. Although I like to name each light after a place in Lancashire, as it's a beautiful county and Lancashire and Lancaster is the core of Lancaster Lights.

The level of craftsmanship is exquisite, how long does it take to create each light?

Each light can take up to 8 weeks to be fully made sometimes even longer. The craftsmanship is what makes Lancaster Lights and I am extremely grateful and proud of all the men in their workshops that work on my lights. They are so talented and always finish my lights with a second to none finish.

Do you have a favourite piece from the collection and why?

To be honest I love all my lights the same, it sounds like I have children! I love the Lancaster for its bold and striking presence, the Abbeystead because of its quirky design and the fact that it has never been done before. Finally the Farnworth for its slender look.

Did you face any challenges creating the range?

I did face challenges and there were a few costly mistakes that I made at the start. A daily challenge that I'm finding is that small workshops are starting to disappear due to rising costs and lack of orders. Part of Lancaster Lights ethos is to show the UK's past and present excellence in engineering, I hope that my range champions that.

Through all my challenges, Vera Da Silva Interiors has been a huge supporter and someone I am very thankful to know. Vera kindly lets me house my lights in her shop, it's a brilliant shop and needs to be visited. She's a great Lady and extremely kind.

What is the typical day in the world of Salesh?

A typical day in Salesh's world this often consists of a lot of daydreaming about my next light and looking for old parts. My days however are trying to contact as many designers as possible, building new contacts and trying my best to get hold of an editorial in one of the well known magazines, this would be fantastic!

Being an up and coming designer, do you have any tips for anyone thinking about starting up?

My advice is have a go, there must be nothing worse knowing that you have a talent inside you and not releasing it. Sound advice however often needs to be given at the start and I am very happy to talk and give advice to start up's. Just get in contact through my contact details and I will be more than happy to help.

What are your plans for 2013, will you be launching any new lights?

Yes definitely I want to double the range so hopefully at the end of the year I will have six lights. A dream for me would be to attend the design event "Tent" as an exhibitor.

There has been a lot of press about the death of the high street. Do you feel that the traditional high street is over?

I think in some senses the traditional high street might be coming to an end. What I am seeing is more and more the traditional shops such as ironmongers, green grocers and bakers etc are disappearing to be replaced by market coffee shops and restaurants or expensive food shops. It's also coupled with the fact that so many of us purchase goods online and not forgetting the recession has really hit hard. Our town centres seem to be becoming more places to socialise rather than shops.

If you weren't in design what would you do?

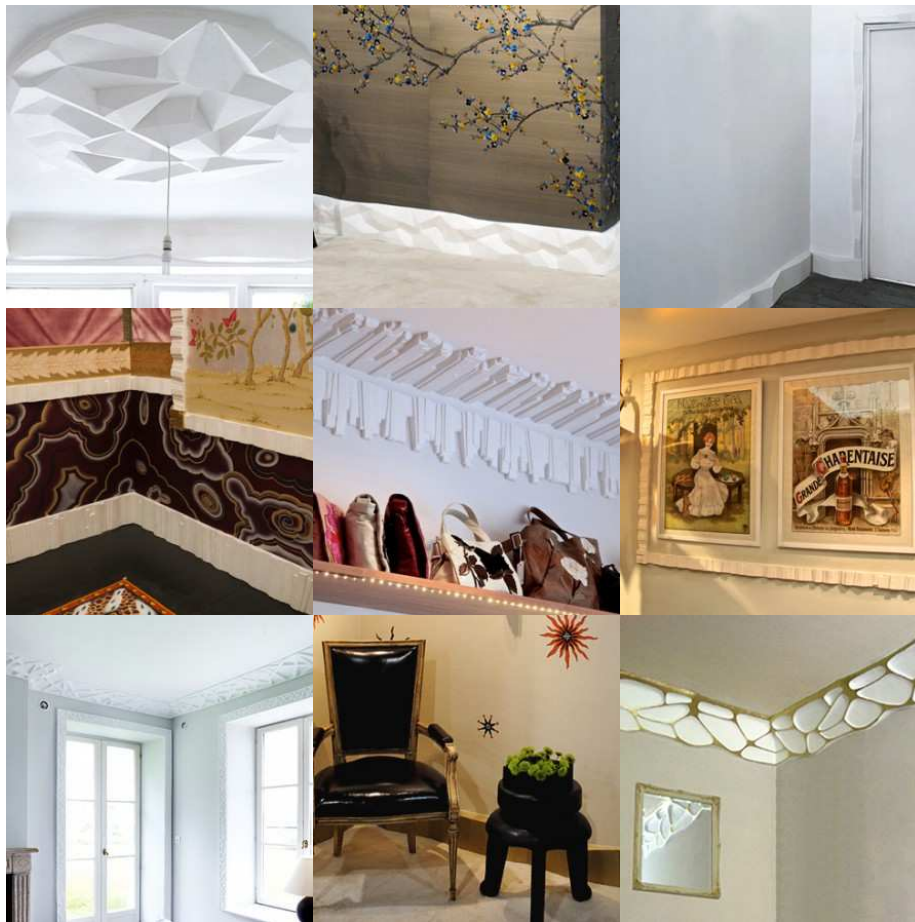
I think I would have followed an environmental career. I am certainly a big advocate for looking after our environment and human populations in distress. I can often find it disturbing to see people living in the conditions that have been given to them and the destruction that is happening to our planet, the consequences are likely to be catastrophic.

For more information go to www.lancasterlights.co.uk/

Posted by Joanne King

Einer Person gefällt das. Zeige deinen Freunden, dass dir das gefällt.

Solomon and Wu: Redesigning the traditional moulding



It's not the first thing you think about when designing or updating an interior, and that's probably because there aren't many companies out there offering such a service, but Solomon and Wu do. Coming together "with the vision of bringing the best elements of contemporary design to a tradition of mouldings that has seen no development in 100 years", they take recognisable detailing such as skirting, cornice, wall panels, ceiling roses, corbels and architraves, and offer a fresh, contemporary take on the traditional designs that isn't like anything that come before it. With over 40 years experience in fine art and decorative plaster moulding they are perfectly placed to offer bespoke design services for individual projects. And it's not just about interiors either, they can also produce exterior moulding elements too. Visit www.solomonandwu.com for more information.

Posted by Alice Carlisle. Images from Solomon and Wu.

Zeige deinen Freunden, dass dir das gefällt.

Go Elsewhere: Andy Warhol



For the first time in Northern Ireland, an exhibition of Andy Warhol's work is on show at THE MAC in Belfast from 17 February – 28 April. With a career spanning over 30 years, Andy Warhol is one of the most influential American artists to emerge in the post-war period. His work is famous for challenging preconceived notions of fine art and popular culture and broke down barriers between the two, to create some of the most distinguishable and highly-regarded popular art of his era.

The exhibition includes a fantastic range of Warhol's work, spanning his entire career and across a selection of media, from his

most recognisable work such as the four-part 'Camouflage' (1986) to a selection of Polaroid self-portraits. There are also 126 Warhol posters on display including the famous cow wallpaper and Chairman Mao.

The exhibition is free and open daily from 10am – 7pm. For more information go to www.themacive.com

Posted by Dee Laffan

Gefällt mir

2 Personen gefällt das. Zeige deinen Freunden, dass dir das gefällt.

Tweet

[Older posts »](#)

© 2013 We are Elseware. All rights reserved.