

Installation and care instructions

PETIT PILOTE WALL LIGHTS



MASSIFCENTRAL

Content

Important information	2
Mounting	3
Electrical connections	3
Operation and care	4
Technical specifications for each light	4

Important information please read carefully prior to assembly!

Each light is subject to quality control and testing before it is dispatched. Please unwrap the components carefully!
The polished or nickel-plated metal surfaces of the product are sensitive. Do wear gloves and mount the parts on soft pads like blankets etc.



This is a low-voltage LED light! Always use the included power supply and never connect the light cable directly to the 220 V mains network. This would destroy the light completely.

Important! Electrical devices may only be installed and assembled by qualified electricians. Applicable health and safety regulations must be observed. Shut off the mains supply (switch off the automatic circuit breaker) before commencing work on the device in order to prevent electric shocks. Failure to adhere to the installation instructions may cause fires or other hazards.

Important! Do not twist the wire-insulated light cable!

Mounting

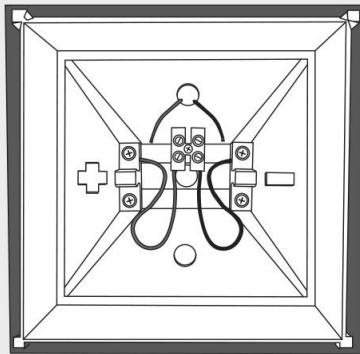
The flush-mounting box (dimensions 116 x 116 x 50 mm) has to be plastered in and function as bracket and current feeder for the light. The mounting clips are made of brass and are the electrical contacts too, please keep them clean during installation.

Important: the top edge of the flush-mounting box should end flush with the surface of the plaster, or else the frame of the light will stand out of the wall when the installation is finished. If the flush-mounting box is plastered in too deep it will not be possible to install the light using the mounting clips.

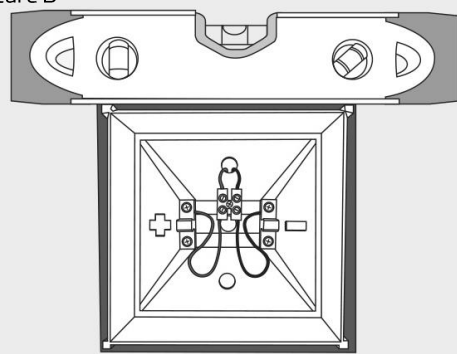
Should there be problems with the alignment of the light after the flush-mounting box is plastered in, the mounting clips can be adjusted using the screws. The clamping force of the snap can also be set up to ensure a stable installation.

1. Insert the flush-mounting box with the mounting clips aligned horizontal into the recessed area of the wall and guide the in-wall cables through the designated holes (Picture A).
2. Connect cables using the terminal block. Please note the polarity positive terminal = red and negative terminal = black (Picture B).
3. Align flush-mounting box using the spirit level and plaster it in (Picture B).
4. Attach the light to the flush-mounting box using the mounting clips (Picture C).

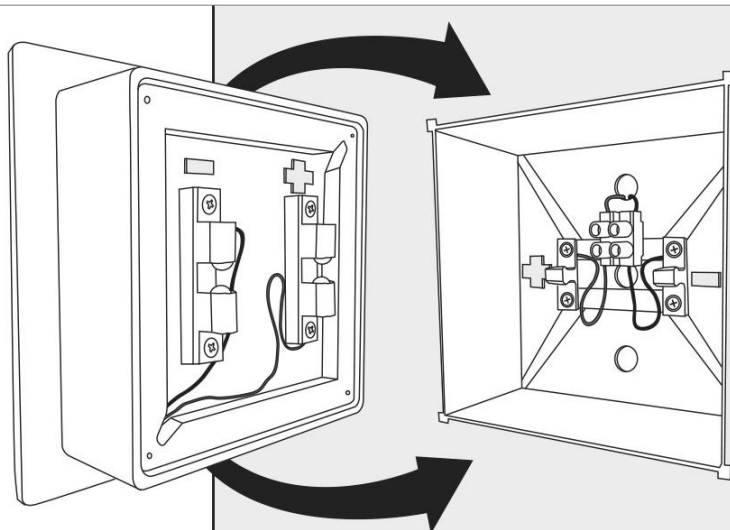
Picture A



Picture B



Picture C



Electrical connections

This is a low-voltage LED light! Always use the included power supply and never connect the light cable directly to the 220 V mains network. This would destroy the light completely.

Important! Electrical devices may only be installed and assembled by qualified electricians. The applicable health and safety regulations must be observed. Shut off the mains supply (switch off the automatic circuit breaker) before commencing work on the device in order to prevent electric shocks. Failure to adhere to the installation instructions may cause fires or other hazards.

Connect the 220 V cable to the primary side of the power supply. Connect the secondary side of the power supply to the cable using the terminal block supplied and bearing in mind the correct polarity: red = plus = +, black = minus = -.

This light is equipped with the following interfaces dimming mode:

- ☐ External power supply ☐ Integrated power supply (In case of integrated power supply, the light is rated IP 20)
- ☐ Dimmer with 1–10 V control voltage
- ☐ DALI
- ☐ Push dim, connection to a switch via cable
- ☐ Leading edge phase dimmer (keep light at full power for approx. 2 min before dimming first time!!)
- ☐ Wireless solution with remote control
- ☐ RF sender
- ☐ No dimmer

See also the enclosed instructions and/or labels on the component housings.

Operation and care

The outside of the socket may reach temperatures of up to approx. 60°C when in operation. Warning: risk of burning.

All metal surfaces of the light are nickel-plated or made of polished aluminum, and are therefore susceptible to scratches and improper treatment. Polished metal surfaces will gradually oxidise/anodise and develop a patina.

For cleaning we recommend the use of a moist cloth and standard glass care products.

Technical specifications for each light

Current / voltage	130 mA / 24 V	Colour temperature	2.700 K
Power	approx. 4 Watt	Weight	approx. 1 kg
Luminous flux / efficiency	200 lm / 50 lm/W	Dimensions (LxWxH)	approx. 131 x 131 x 53 mm

Lifespan of the LED module: approx. 40,000 hours; can be replaced by an electrician.



Manufacturer:

LCB Manufactur GmbH, Eiswerderstr. 16, D-13585 Berlin

p +49 (0)30 33 30 80 30 00, info@massifcentral.de, www.massifcentral.de

© 2021, LCB Manufactur GmbH. All rights reserved. These drawings and the information contained herein may not be reproduced, communicated to public or made available in whole or in part without prior permission. Patents issued and pending. Alterations in design, technology and manufacture are subject to change at any time. No guarantee for any typographical errors assumed.